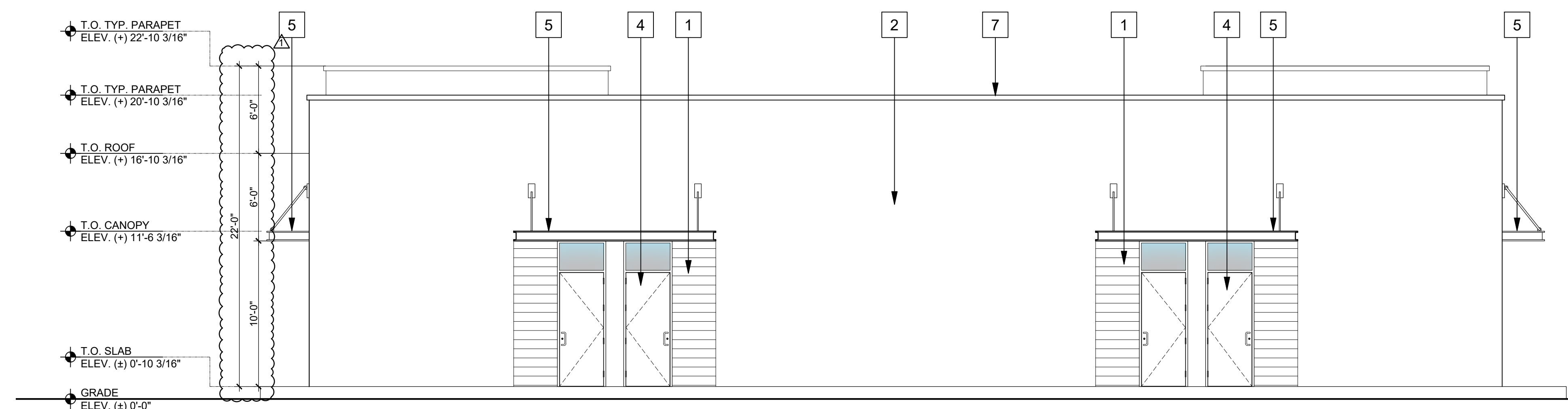


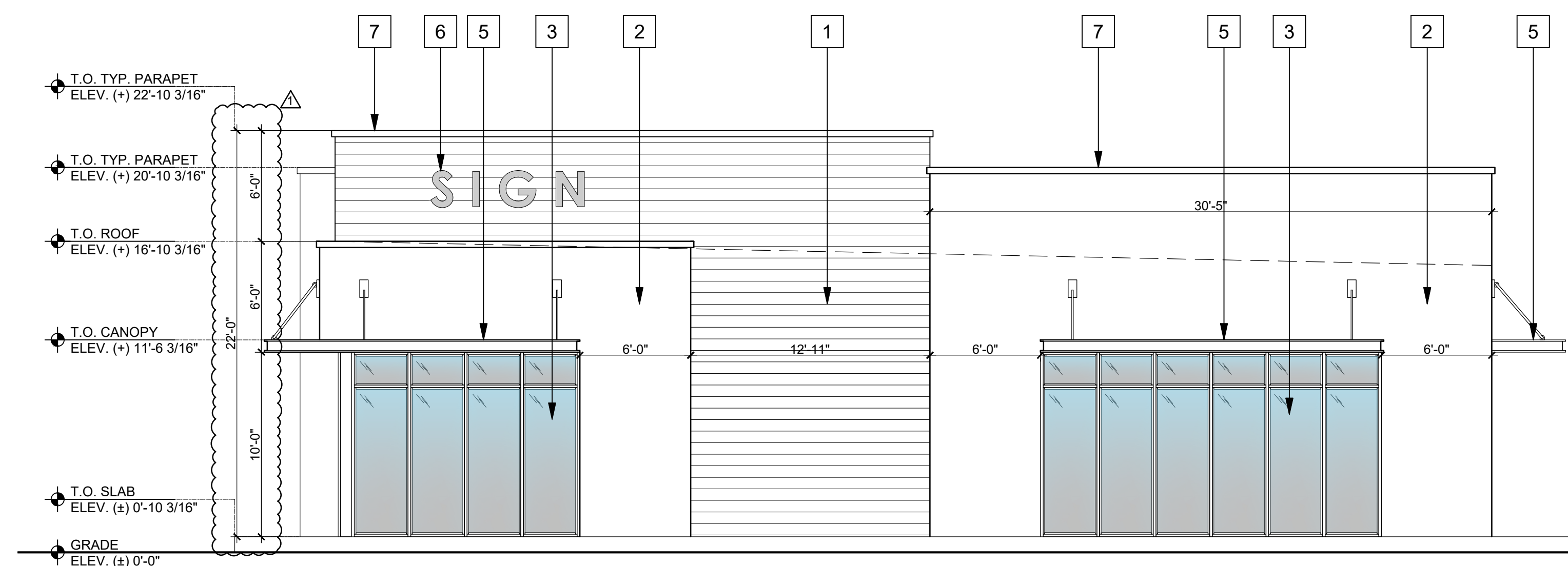
1 NORTH ELEVATION

SCALE: 3/16" = 1'-0"



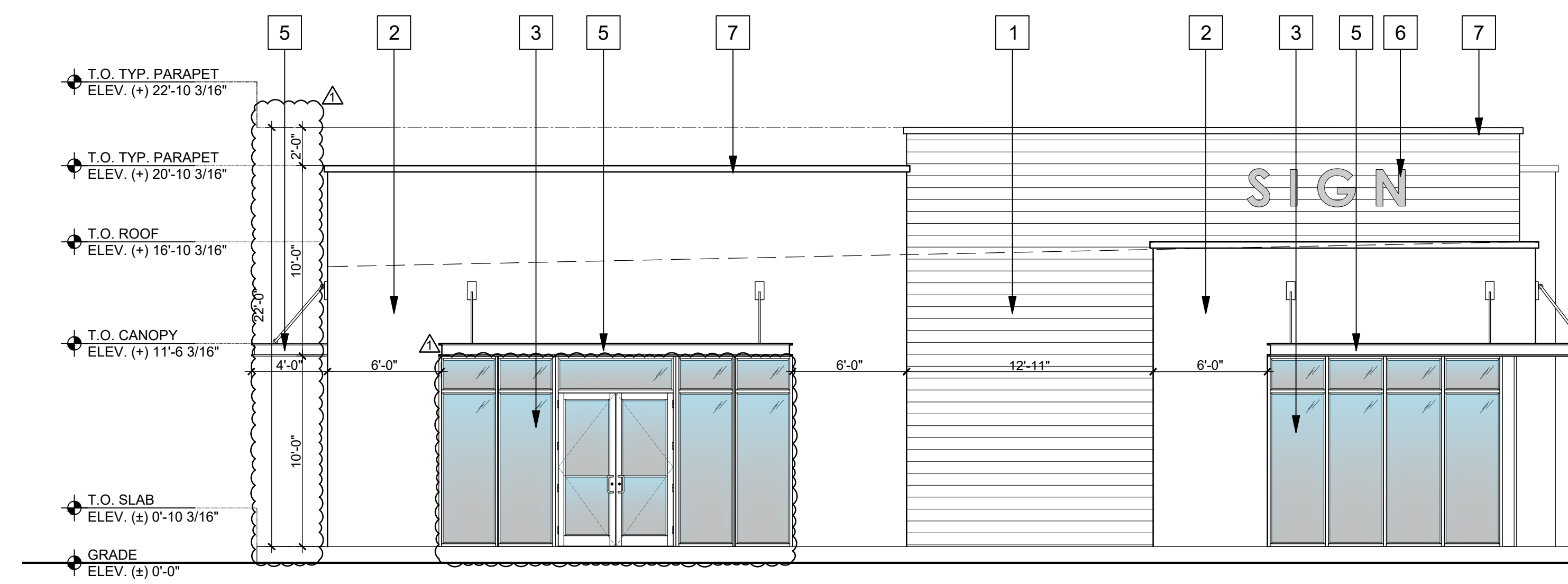
2 SOUTH ELEVATION

SCALE: 3/16" = 1'-0"



WEST ELEVATION

SCALE: 3/16" = 1'-0"



 EAST ELEVATION

SCALE: 3/16" = 1'-0"

GLAZING COMPLIANCE TABLE

FACADE ORIENTATION	FACADE WIDTH (FT)	FACADE HEIGHT (FT)	TOTAL FACADE AREA (SF)	GLAZING AREA (SF)	% GLAZING
NORTH ELEVATION	82'-4" FT	20'-0" FT	1,713 SF	685 SF	40 %
SOUTH ELEVATION	82'-4" FT	20'-0" FT	1,640 SF	132 SF	8%
WEST ELEVATION	64'-8" FT	20'-0" (FT)	1,355 SF	308 SF	23%
EAST ELEVATION	64'-8" FT	20'-0" (FT)	1,355 SF	308 SF	23%

KEY LEGEND

1	PAINTED STUCCO WITH SCORE LINES FINISH	4	IMPACT RESISTANT DOOR.	7	PARAPET METAL CAP / FLASHING.
2	PAINTED SMOOTH STUCCO FINISH.	5	CANOPY.		
3	IMPACT RESISTANT WINDOW. STOREFRONT GLAZING TO BE TRANSPARENT GLASS	6	PROPOSED SIGN AREA.		

SHEET NUMBER
A-2.0